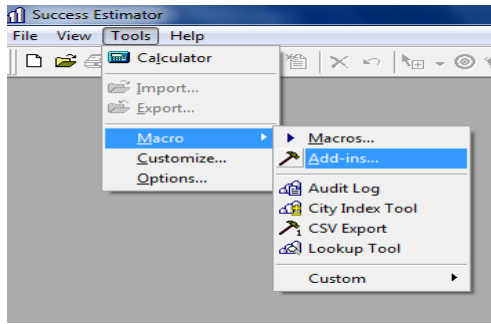
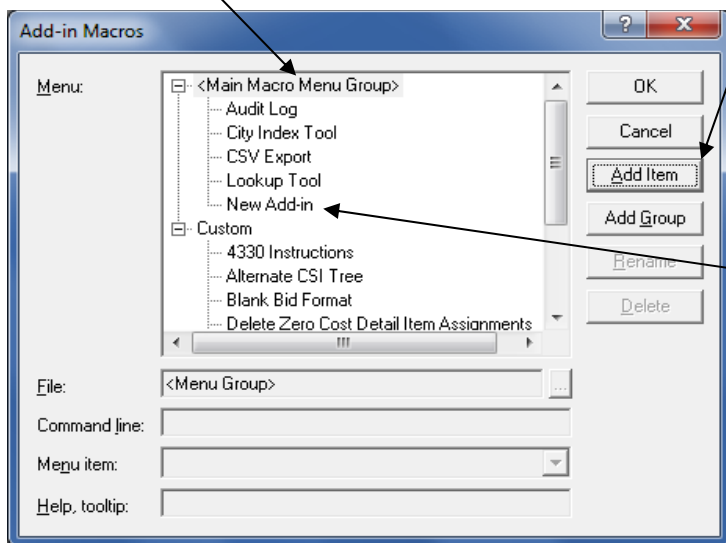


Adding a Macro Toolbar Icon to Success Estimator

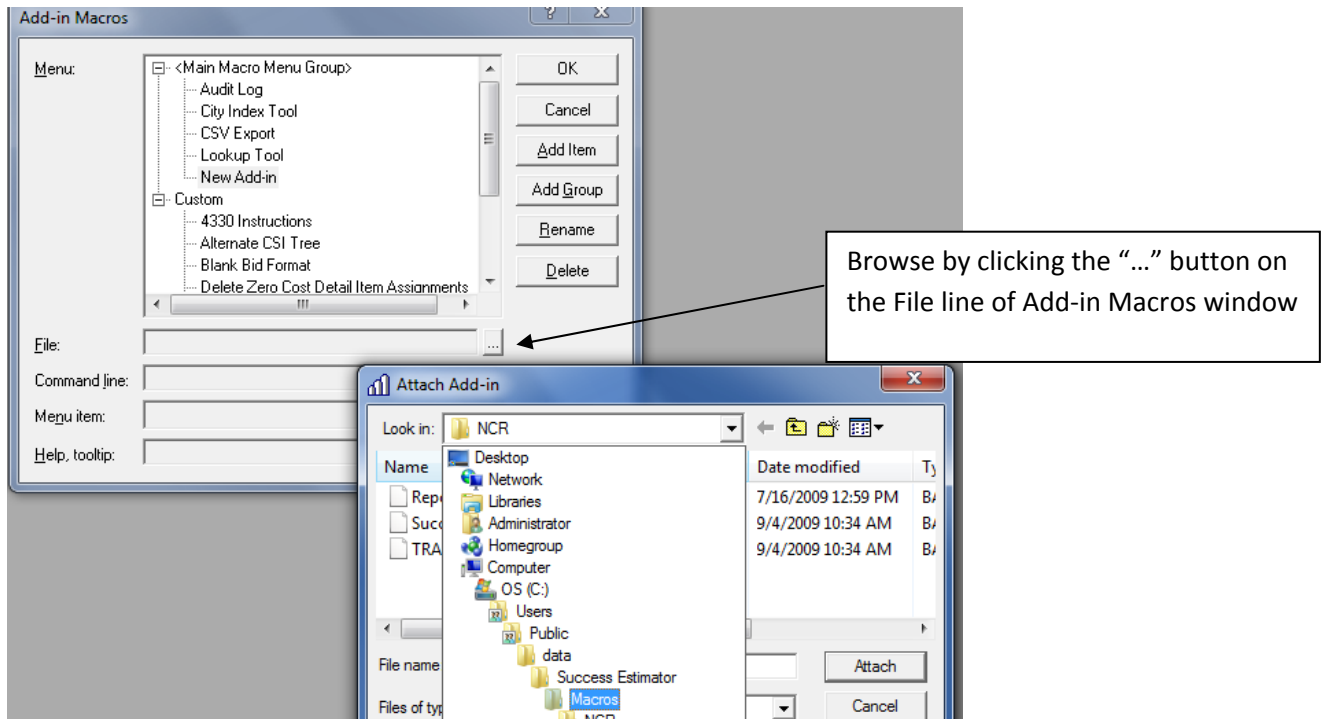
1. First select **Tools / Macros / Add-Ins** from the Menu Bar in Success Estimator



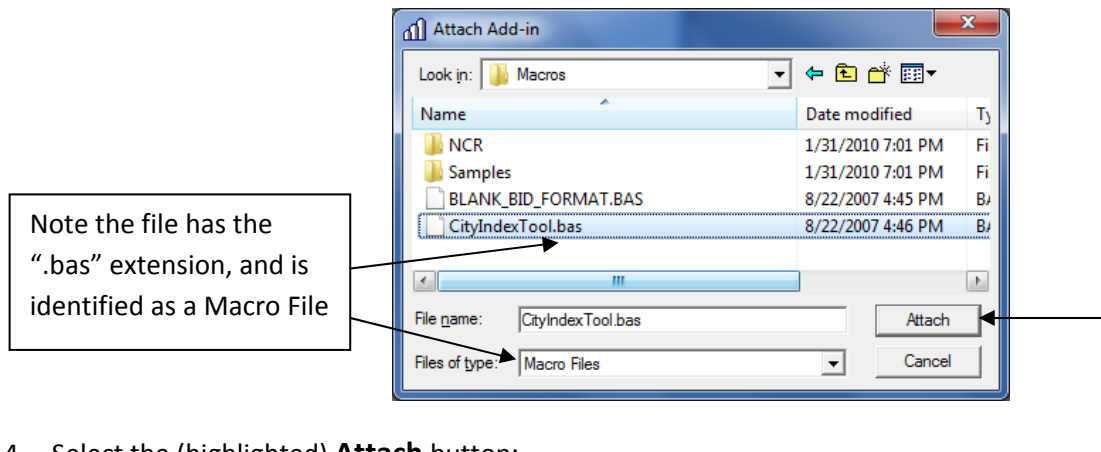
2. Highlight **Main Macro Menu Group** (optional) & Select **Add Item**



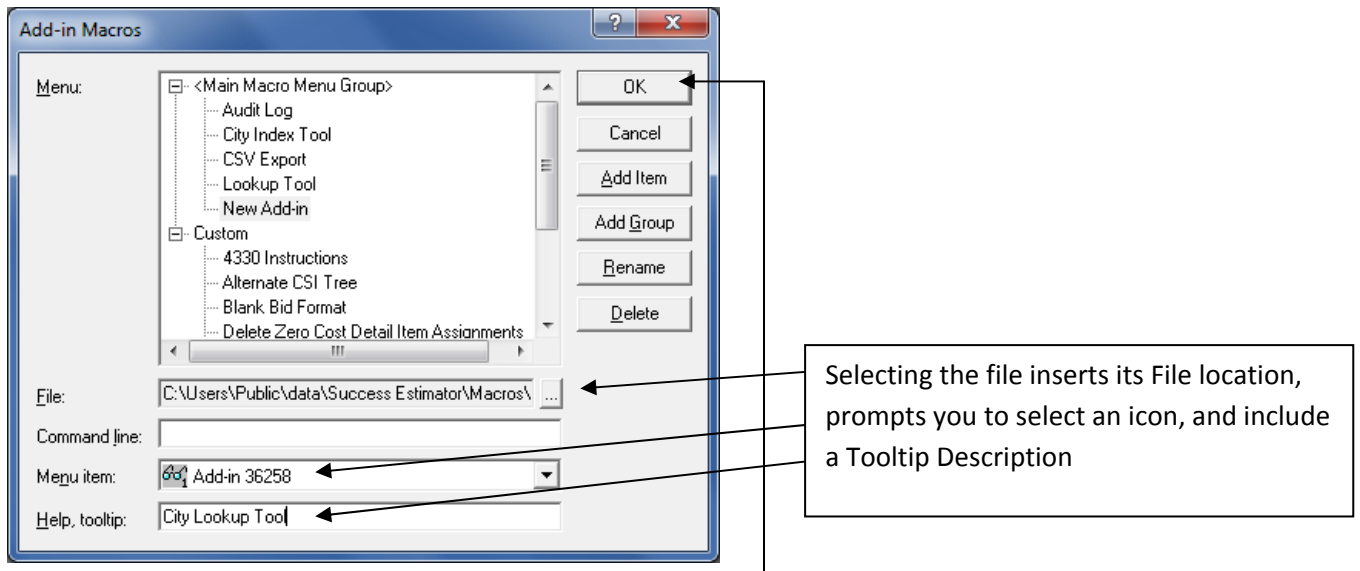
This creates "New Add-in" line in the Highlighted group



- The Macro file is usually in the US Cost Program File folder area, or in the US Cost Data area (as in this example) of your hard drive:



- Select the (highlighted) **Attach** button:



5. Selecting **OK** at the top of this window finishes the operation, and places the Macro icon on the Toolbar